



Retail POS Guardian™



A Retail Solution for Reducing the Spread of Germs

Retail POS Countertop Shield

The retail Guardian™ is ideal for grocery, convenience and retail settings and is built to help reduce the spread of contagious, airborne germs commonly spread by coughing or sneezing. Create a protective shield in any place of commerce that requires direct interaction between employees and customers in close proximity such as POS checkouts.

The acrylic countertop screen comes with options for the size and type of opening at the bottom, allowing for the transfer of items or payment for transactions. The retail Guardian™ reduces the risk of virus spread while allowing items to be exchanged at the checkout through a protective barrier.

- Tri-fold and single screen options to configure to existing POS checkouts and points of commerce
- A sturdy, 'no-tip' solution with mounted feet
- A portable solution that can fully collapse for storage
- Easily sanitized with any common disinfectant
- One year warranty
- Made in the USA



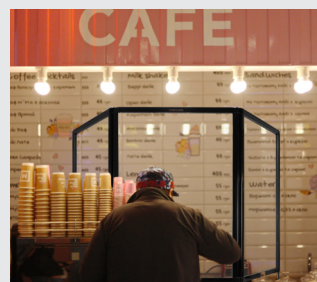
Quality Guaranteed

Built from durable, clear acrylic with solid aluminum frame to match the requirements of high traffic retail environments.



Safer Interactions

Put your customers at ease with a visible barrier that allows for face-to-face interaction while still maintaining separation of personal space.



Protect Your Employees

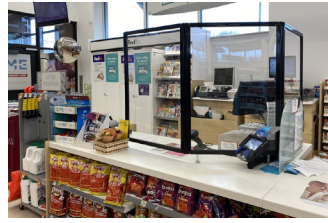
May help shield customers and employees from unintentional exposure to a sneeze or cough during transactions.



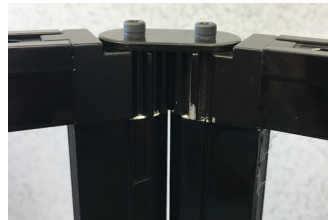
Essential for Business

Ideal for essential businesses such as convenience, grocery, retail, medical, dental, and pharmacy settings.

APG's Guardian™ Countertop Shield



Sturdy Construction, No Tip Solutions W/ Mounting Hardware



Product Features

Solid	Aluminum frame and clear acrylic construction.	Safe	Aluminum frame and clear acrylic construction.
Portable	Fully collapsible; panels 9 of the 3 panel units) stack onto one another at a depth of 3 inches.	Dimensions	Each panel of the 3 panel screen measures 3ft-¾ in tall x 2ft-2 ¾ in wide, with a variable depth using included hardware of 1 ¼ - 2 ½ or 4 ½in gap at base. Overall length when straightened is 6ft- 8in wide. Single panel screen measures 29" tall x 32.25" wide with a bottom open window of 6.5" x 30".
Cleanable	Able to be cleaned with wipes, bleach, or any common disinfectant.	Stable	Each panel weighs 24 pounds, providing sturdiness so it is not easily tipped over. Additionally, adhesive strips or glue can hold the feet in place for added stability. Single panel has large feet on both sides that can be screwed to the countertop for added stability.
Solid	An opening at the bottom of the partition allows for the transfer of small items, papers, or payment for transactions. Feet risers allow cables for Credit/Debit to fit under the screen without additional check out modification.		
Functional	Barcodes can be scanned at checkout through the clear acrylic, preventing physical contact from transferring products.		

Product Numbers

HS66910	Countertop Screen 6'6" x 3' Clear Acrylic Without Window with Adjustable Feet
HSW66915	Countertop Screen 6'6" x 3' Clear Acrylic W/ Window with Adjustable Feet
HSW32902	Countertop Single Screen 32.25" x 29" Clear Acrylic With 6.5" full length Window

Contact Us



APG Cash Drawer, LLC
5250 Industrial Blvd NE
Minneapolis, MN 55421



+1 (763) 571-5000



sales@us.cashdrawer.com

(M-43-443) Rev. B
© 2020 APG Cash Drawer, LLC